



Marksbury, Bath, BA2 9HS

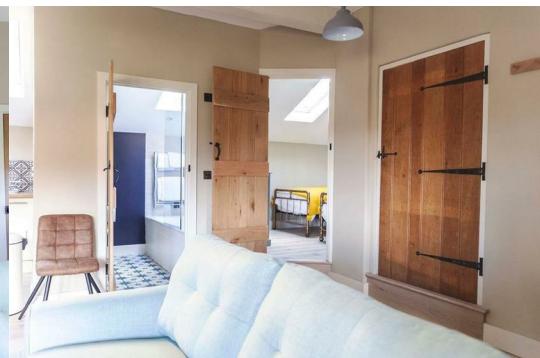
£1,350 PCM



Nestled in the picturesque village of Marksbury, near Bath, this charming barn conversion presents a delightful opportunity for those seeking a harmonious blend of modern living and rustic charm. The property features a spacious reception room, ideal for both relaxation and entertaining guests. The well-appointed kitchen, equipped with fitted appliances, is sure to inspire any home cook, making meal preparation a pleasure.

This barn conversion comprises two inviting bedrooms, with one generously sized bedroom providing a peaceful retreat at the end of the day. The interior is further enhanced by elegant oak internal doors, which add a touch of sophistication to the overall design.

Set against the backdrop of stunning countryside, this home offers a tranquil lifestyle while remaining within easy reach of Bath's vibrant amenities. This barn conversion in Marksbury is a wonderful opportunity not to be missed. Embrace the charm of village life while enjoying the comforts of modern living in this exquisite property.



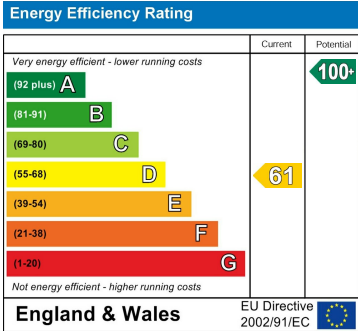
Area Map



Floor Plans



Energy Efficiency Graph



These particulars, whilst believed to be accurate are set out as a general outline only for guidance and do not constitute any part of an offer or contract. Intending purchasers should not rely on them as statements of representation of fact, but must satisfy themselves by inspection or otherwise as to their accuracy. No person in this firms employment has the authority to make or give any representation or warranty in respect of the property.